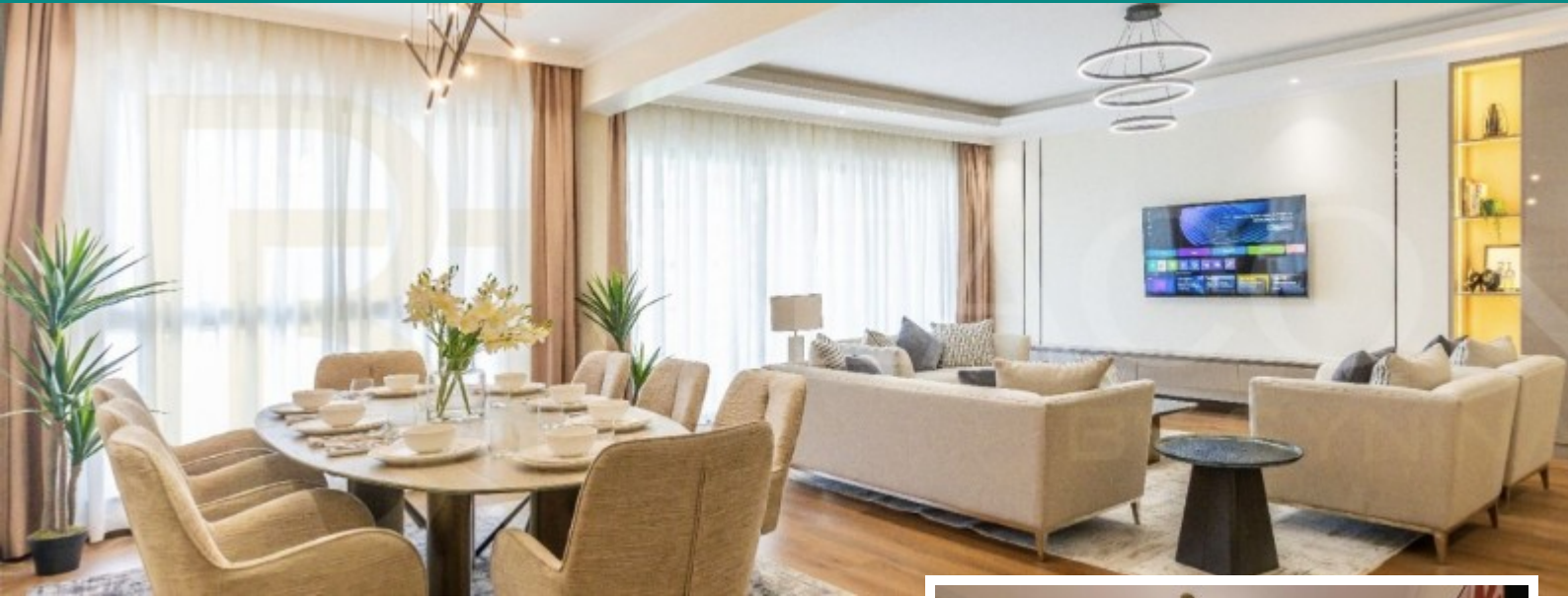


FOR SALE



Beacon by Synina | Luxury 3 & 4 Bedroom Apartments + DSQ for Sale in Kileleshwa

Price: USD 225,000
Location: Kileleshwa
Bathrooms: 3
Bedrooms: 3

The development features 67 residences across 20 floors, offering luxurious 3 and 4 bedroom all ensuite apartments with DSQ, as well as premium penthouse residences. Each home is thoughtfully designed with generous living spaces, natural light, and modern comfort. Available Units 3 Bedroom + DSQ Fully ensuite bedrooms Spacious lounge and dining area Modern kitchen with pantry Balcony spaces Domestic Staff Quarter Available sizes: 221 SQM – 248 SQM Prices from KES 29M – KES 31.9M Approx. USD 225,000 – USD 247,000 4 Bedroom + DSQ Fully ensuite bedrooms Spacious family living areas Modern kitchen with pantry Expansive balconies Domestic Staff Quarter Available sizes: 335 SQM – 360 SQM Prices from KES 40M – KES 46M Approx. USD 310,000 – USD 357,000 Amenities Residents enjoy access to premium lifestyle facilities including: Rooftop swimming pool Fully equipped gym and wellness facilities Rooftop entertainment spaces Concierge lobby Multipurpose

[Read more on our website](#)

